



JEEN INTERNATIONAL CORPORATION

24 Madison Road, Fairfield, New Jersey 07004, USA
Tel: 800-771-JEEN (5336), Tel: 973-439-1401, Fax: 973-439-1402,
email: info@jeen.com , Website: www.jeen.com

JEECHEM CEO

INCI Name: Cetearyl 2-Ethylhexanoate
CA Index Name: Hexanoic Acid, 2-Ethyl-, Hexadecyl-Octadecyl Ester
CAS Numbers: 59130-69-7; 59130-70-0
EINECS Numbers: 261-619-1, 261-620-7

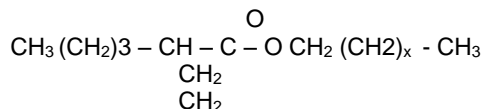
APPEARANCE @ 25°C:	CLEAR LIQUID
COLOR, GARDNER:	1 MAXIMUM
ODOR:	SLIGHT, CHARACTERISTIC
ACID VALUE, MGKOH/G:	1.0 MAXIMUM
SAPONIFICATION VALUE:	135 - 150
IODINE VALUE:	1.0 MAXIMUM
FLASH POINT:	170 DEG C
SOLUBILITY:	SOLUBLE IN MOST ORGANIC SOLVENTS, SUCH AS ALCOHOLS, ESTERS, KETONES, MINERAL OIL, NATURAL FATS, HIGHER GLYCOLS, GLYCOL ETHERS ALIPHATIC, AROMATIC AND CHLORINATED HYDRO- CARBONS.

SUGGESTED APPLICATIONS: JEECHEM CEO, IS AN EMOLLIENT ESTER SIMILAR TO THE NATURAL OIL DERIVED FROM WATERFOWL. IT IS AN ODORLESS, COLORLESS LIQUID DERIVED FROM SYNTHETIC SOURCES, THUS ASSURING PRODUCT UNIFORMITY. JEECHEM CEO SPREADS EVENLY ON THE SKIN TO IMPART VELVETY SOFTNESS. IT ALSO EXHIBITS EXCELLENT ADHESION PROPERTIES WHICH PERMITS IT TO FUNCTION AS A WATER-PROOFING AGENT. AT TEMPERATURES LESS THAN 25° C PRODUCT WILL BECOME HAZY AND PPT, WARMING AND RE-CONDITIONING TO 25°C RESTORES CLARITY.

Standard Drum Packaging:	55 Gallon Steel Drum			
Weights:	Gross: 437 Lbs.	Tare: 37 Lbs.	Net: 400 Lbs.	
	Gross: 198.22 Kgs.	Tare: 16.78 Kgs.	Net: 181.44 Kgs.	

Standard Pail Packaging:	5 Gallon Pail			
Weights:	Gross: 43 Lbs.	Tare: 3 Lbs.	Net: 40 Lbs.	
	Gross: 19.50 Kgs.	Tare: 1.36 Kgs.	Net: 18.14 Kgs.	

Formula:



X = 14 To 16

You Can Count On Us!

This information is furnished without warranty, expressed or implied, except that it is accurate to the best knowledge of JEEN International Corporation. The data on this sheet relates only to the specific material designated herein. JEEN International assumes no legal responsibility for use or reliance upon these data.

Latest Revision Date: 11/04/2011